

Washington Briefing: APDU Annual Meeting

Wednesday, September 14, 2016

Steve Pierson

Director of Science Policy

American Statistical Association

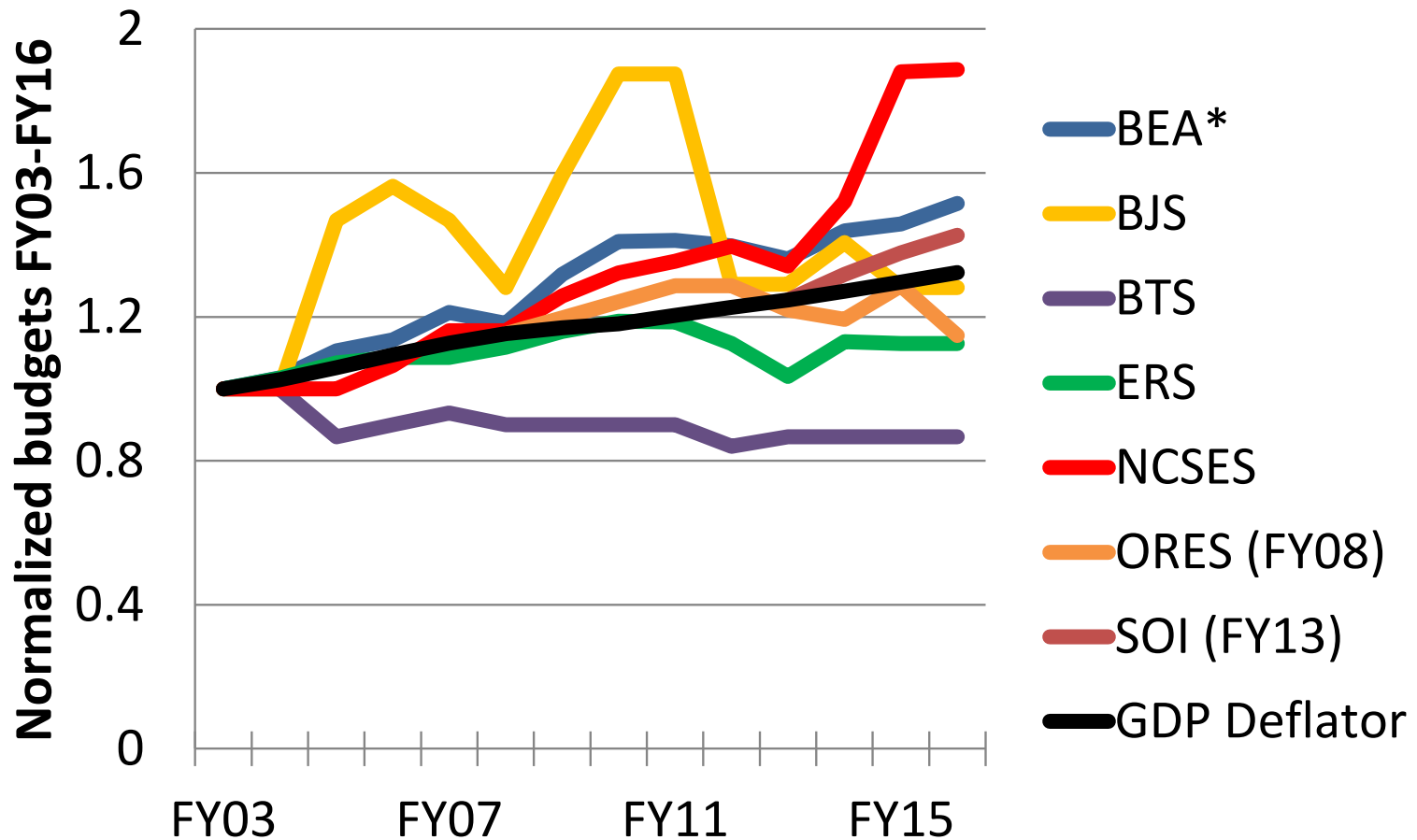
Outline

- One-pager on your table overviewing issues
- Mary Jo Hoeksema: Budget Challenges for Census, BLS and NCHS
- Brian Harris-Kojetin: Broader Challenges and Opportunities for Federal Statistical Agencies
- Also be aware of
 - U.S. Chief Statistician Katherine Wallman Retiring
 - Terms for BLS and Census Heads ending

				FY17				
Agency	FY14	FY15	FY16	Request	% change	House	Senate	Final
BEA	95	96	105	110.7	5.3	103	105	
BJS	45	41	41	58	41.5	48	41	
BLS	592	592	609	641	5.3	609	609	
BTS	26	26	26	26	0	n/a	n/a	26
Census	945	1088	1370	1660	21.2	1470	1518	
EIA	117	117	122	131	7.4	122	122	
ERS	85.8	85.4	85.4	91	6.6	86.0	86.8	
NASS	170	172	168	177	5.1	168	169.6	
NCES	235.1	232	261	274	5	232	261	
NCSES	47	58.3	58.5	60	2.6	&	&	
NCHS	155	155	160	160	0	160	156	

Medium Size Agency budgets

Mid-Size Federal Statistical Agencies



Larger Statistical Agencies

